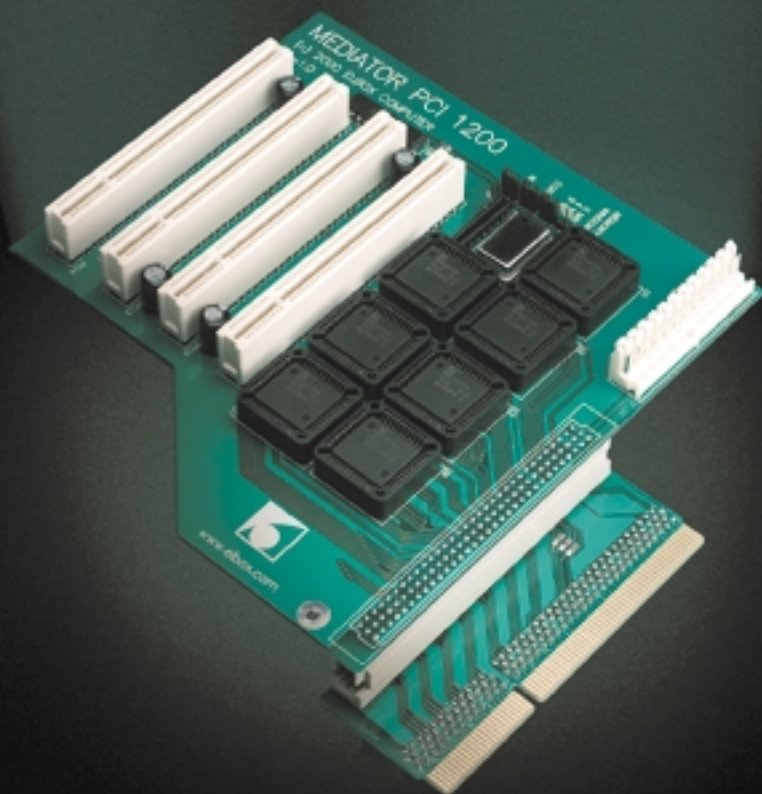
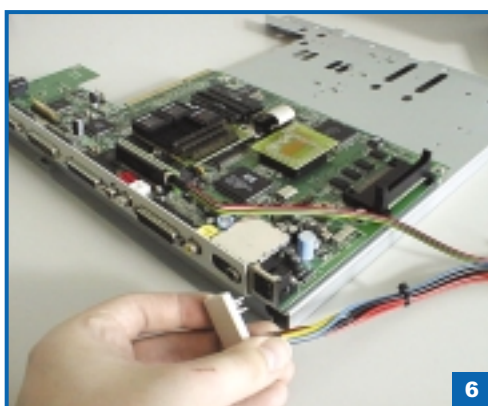
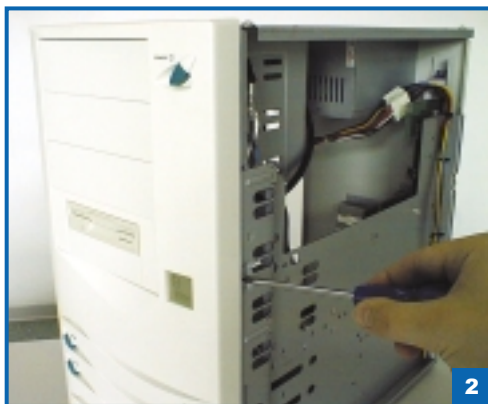


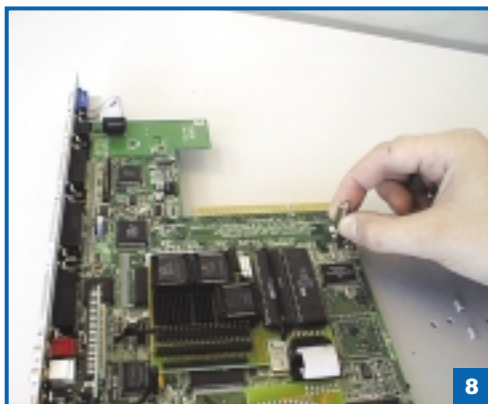


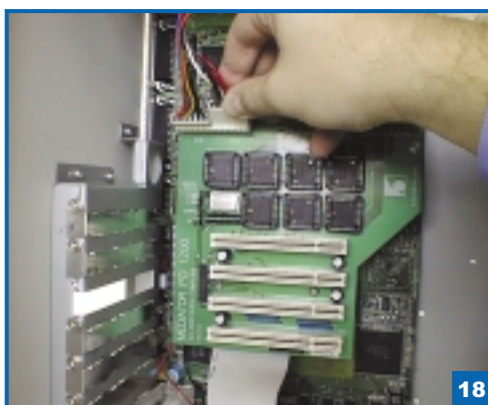
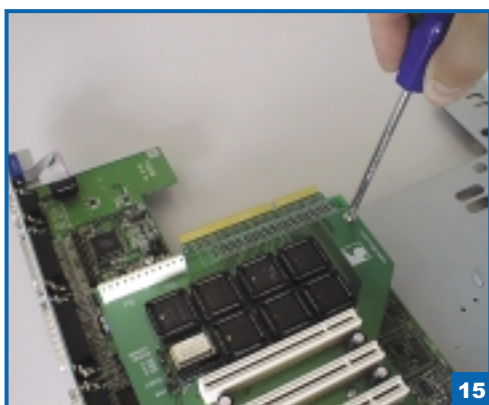
# MEDIATOR PCI 1200

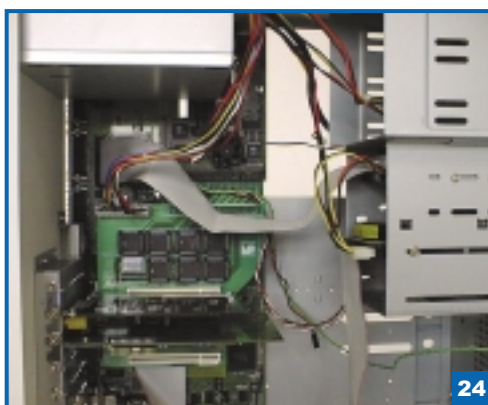
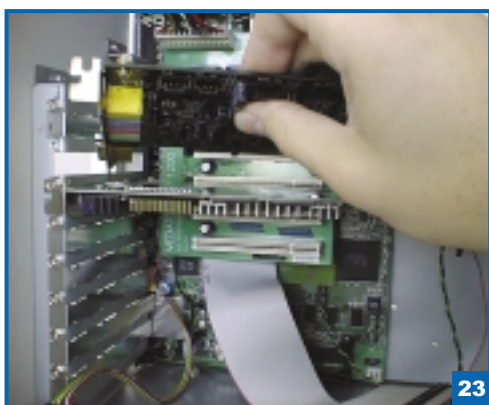
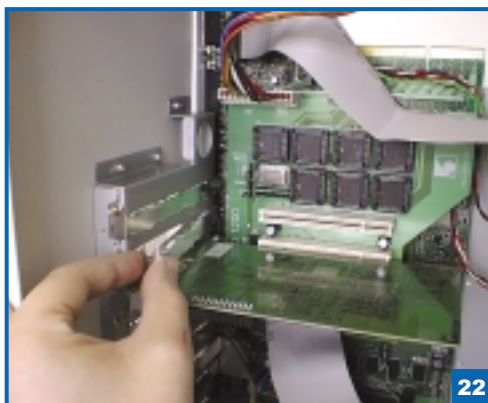
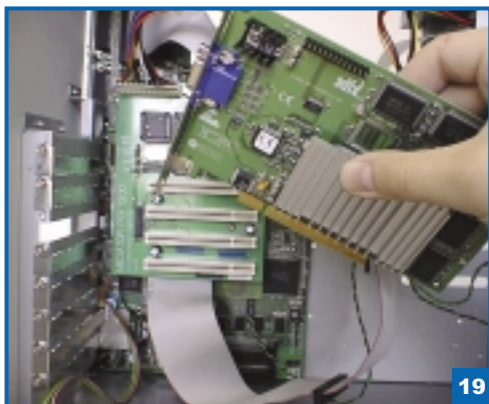


**QUICK INSTALLATION GUIDE**









## 1. MEDIATOR PCI 1200 Jumpers Description

### MEMORY WINDOW

<b>0 MB</b>	PCI memory space unavailable, access only to PCI I/O space; allows using PCI Ethernet, sound, modem etc. cards; use of graphic cards disabled.
<b>4 MB</b>	4 GB PCI memory space available through the 4 MB Amiga memory window, access to PCI I/O space and to PCI Memory Space through the 4 MB window; allows using any PCI cards.
<b>8 MB</b>	4 GB PCI memory space available through the 8 MB Amiga memory window; access to PCI I/O space and to PCI Memory Space through the 8 MB window; allows using any PCI cards.
<b>CONFIG</b>	Type of configuration cycles during Amiga's start-up.
<b>WAIT</b>	Adding waitstates during write cycle in Amiga.

## 2. How to set Jumpers in MEDIATOR PCI 1200

### MEMORY WINDOW

<b>Set 0 MB</b>	If you use 8MB of RAM installed in the memory expansion or in the turbo card configuring this memory in the lower boundary (e.g. M-TEC 1230 turbo card).
<b>Set 4 MB</b>	If you use 4MB of RAM installed in the memory expansion or in the turbo card configuring this memory in the lower boundary (e.g. M-TEC 1230 turbo card) or if you use the 4 MB PCMCIA memory expansion.
<b>Set 8 MB</b>	If you use 8 MB or more RAM installed in the turbo card configuring this memory in the higher boundary (all the turbo cards for which more than 8MB Fast RAM may be installed e.g. Apollo 1230, Apollo 1240, Apollo 1260, Blizzard 1230, Blizzard 1240, Blizzard 1260, Blizzard PPC, Elbox 1230-II).
<b>CONFIG</b>	Set CLOSED If you use A1200 with the memory expansion, M-Tec 1230, Elbox 1230, GVP 1230, Apollo 1230, Apollo 1240, Apollo 1260, old Blizzard cards. Set OPEN If you use A1200 with the empty expansion slot, Blizzard 1230-IV, Blizzard 1240, Blizzard 1260, Blizzard PPC.
<b>WAIT</b>	OPEN For all known turbo/memory expansion cards (default setting). CLOSED Currently not used.

Elbox Computer  
ul. Lipowa 4  
30-702 Kraków  
fax: +48 12 2630032  
e-mail: [info@elbox.com](mailto:info@elbox.com)  
[www.elbox.com](http://www.elbox.com)

